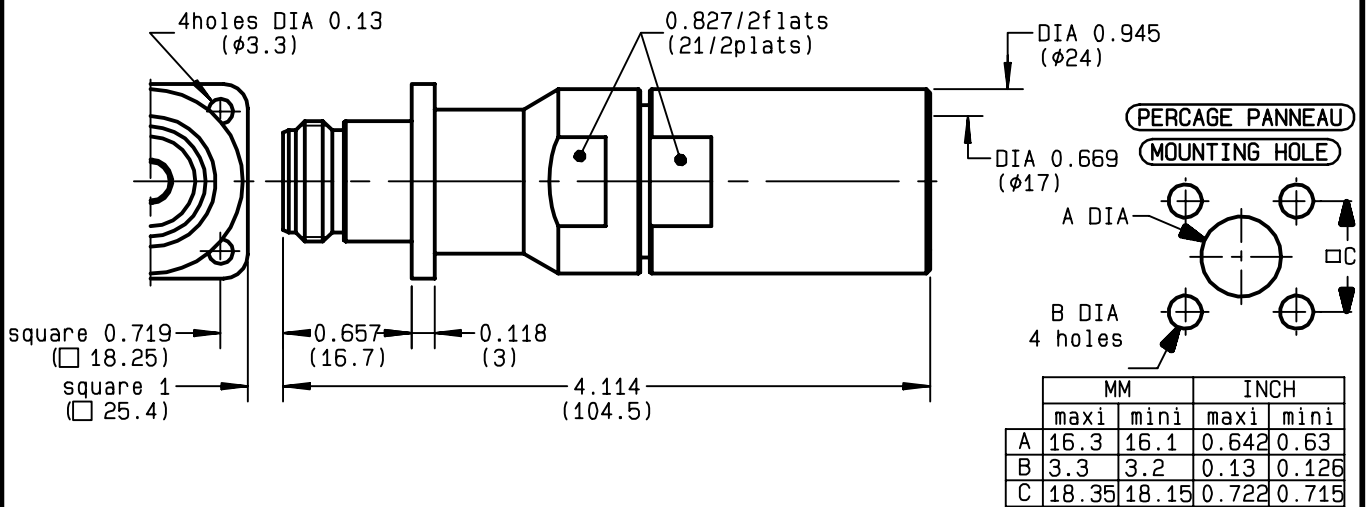


**STRAIGHT SQUARE FLANGE JACK CLAMP TYPE  
CABLE 1/2" FLEXIBLE CORRUGATED**

**R161.291.150**  
**SERIES N**



NOMINAL IMPEDANCE	<b>50</b> Ω
FREQUENCY RANGE	<b>0-11</b> GHz
TEMPERATURE RATING	<b>-55/+155</b> °C
V.S.W.R	<b>1.15</b> + x F(GHz)Maxi
RF INSERTION LOSS	<b>0.048</b> √F(GHz) dB Maxi
VOLTAGE RATING	<b>1400</b> Veff Maxi
DIELECTRIC WITHSTANDING VOLTAGE	<b>2500</b> Veff Mini
INSULATION RESISTANCE	<b>5000</b> MΩMini
HERMETIC SEAL	<b>NA</b> Atm.cm <sup>3</sup> /s
LEAKAGE (pressurized only)	<b>NA</b>
MECHANICAL DURABILITY	<b>500</b> Cycles
WEIGHT	gr
SPECIFICATION	<b>96 158 156 389 4 du 01-92</b> <b>96 158 161 389 4 du 01-92</b>

CABLES : **LDF4RN-50A-1/2"**

OTHERS CHARACTERISTICS

CABLE RETENTION	<b>500</b> N Mini
CENTER CONTACT RETENTION	
Axial force - mating end	<b>27</b> N Mini
Axial force - opposite end	<b>27</b> N Mini
Torque	<b>NA</b> cm.N Mini
RECOMMENDED TORQUES	
Mating	<b>130</b> cm.N
Panel nut	<b>NA</b> cm.N
Clamp nut	<b>800</b> cm.N

CONNECTOR PARTS	MATERIALS	FINISH
BODY	BRASS	BLACK-CHROMIUM 0.2 OVER NICKEL 2
OUTER CONTACT	BRASS	BBR 2
CENTER CONTACT	BERYLLIUM COPPER	GOLD 0.5 OVER NICKEL 2
INSULATOR	PTFE	-
GASKET	SILICONE RUBBER	-
OTHERS PIECES	BRASS	BBR 2

(all values are given in micrometers)

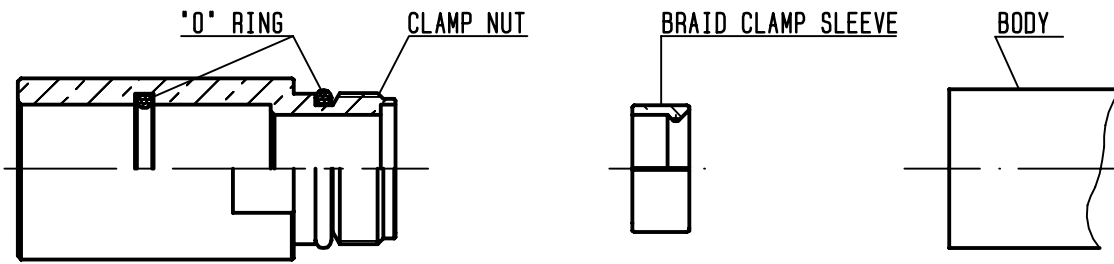
BONOMINI	ISSUE	CREATION DATE	FILE PART-NUMBER	
	<b>0220E01</b>	<b>09/03/1994</b>	<b>92-0019-033</b>	

The information given here is subject to change without notice. Design changes may be in order to improve the product .



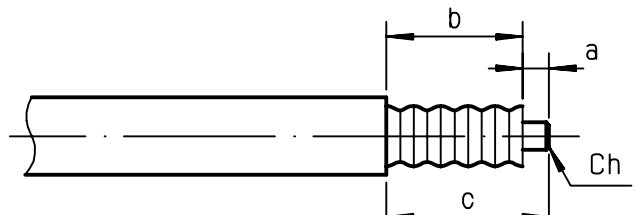
**R161.291.150**

ISSUE **0220E01** SERIES **N**



①

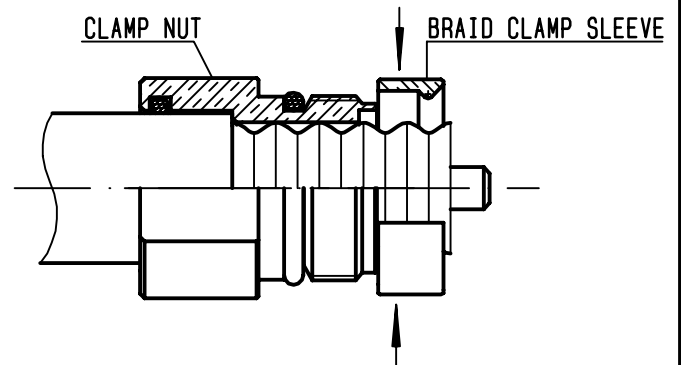
Strip the cable .  
 Cut the external conductor and dielectric on top of the wave as shown .  
 Deburr outer conductor and make a .04 chamfer on centre conductor .



Stripping	a	b	c	d	e
inch	0.197	0.984	1.181	0	0
mm	5	25	30		

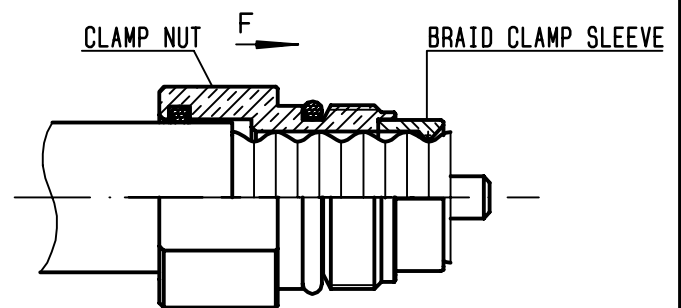
②

Slide the clamp nut until it bottoms the jacket .  
 Assemble the two half ring in the bottom of the wave of the outer conductor .  
 -  
 -  
 -



③

Slide back the clamp nut onto the two half ring (In direction F) .  
 -  
 -  
 -  
 -



④

Screw sub-assembly into the connector body .  
 ( recommended coupling torque 70.8 in.lb )  
 -  
 -

